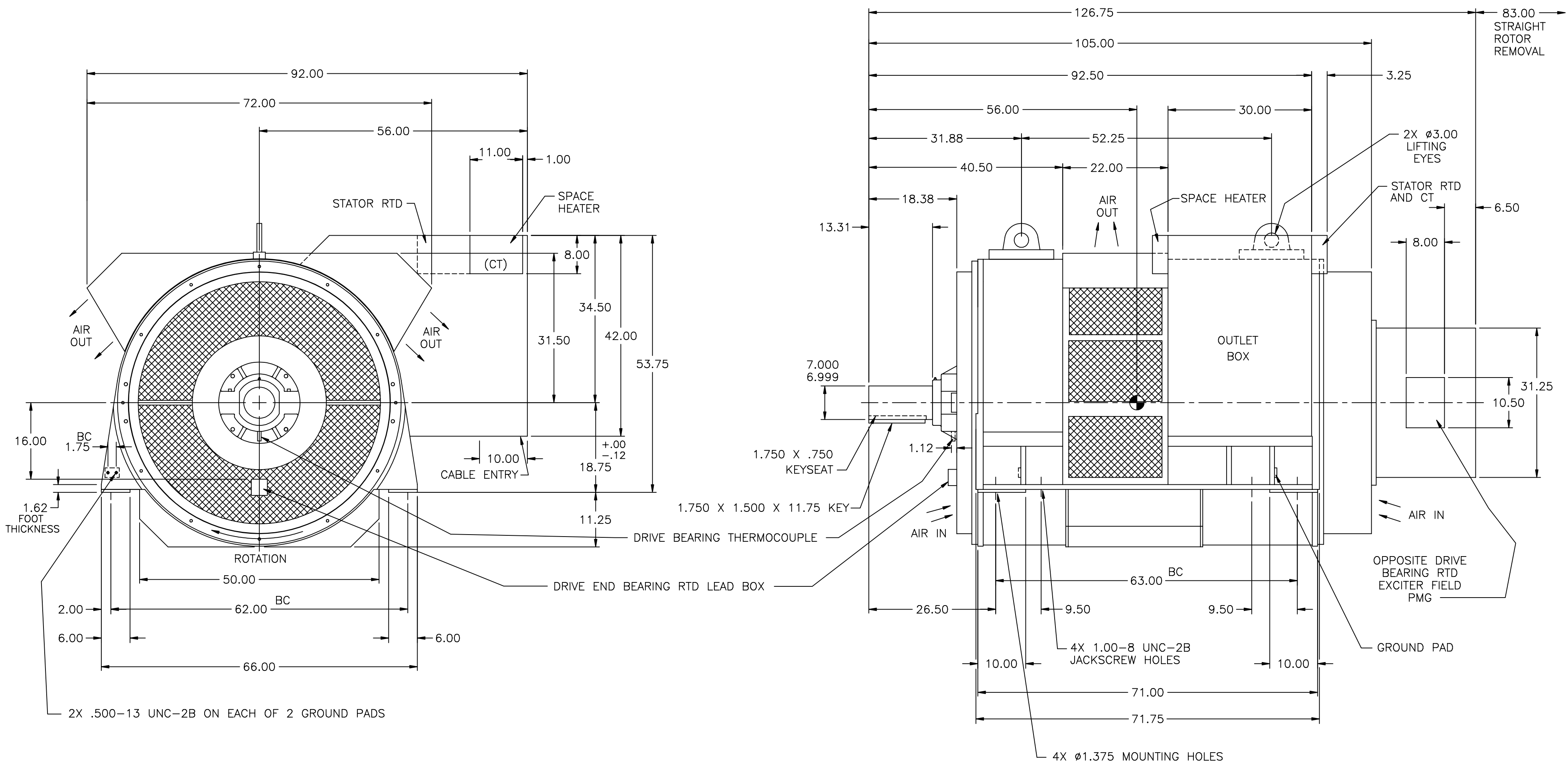


GENERATOR DATA

KW: 3000
 KVA: 3750
 VOLTAGE: 12,470/3/60
 P.F.: 0.8
 F.L. CURRENT: 174 AMP
 INSULATION: CLASS F
 TEMP RISE 105°C OVER 40°C AMBIENT
 DUTY: CONTINUOUS
 SPEED: 900 RPM
 OVERSPEED: 1125 RPM
 ROTOR WK²: 12120 LB-FT²
 AIR FLOW: 8000 CFM

BEARING DATA

TYPE: SPLIT ROLLER
 LUBRICATION: GREASE
 B-10 LIFE: 85,000 HOURS
 INSULATION: OUTBOARD BEARING
 GREASE INTERVAL: 600 HOURS
 ROTOR END FLOAT: .005 INCH
 THRUST CAPACITY: 500 LB



ROTOR WEIGHT: 12,800 LBS.
 STATOR WEIGHT: 16,500 LBS.
 TOTAL WEIGHT: 32,000 LBS.

CERTIFIED FOR					
CUSTOMER NAME			PROJECT NAME		
A	73832	DAS	JFD	DAS	5-1-01
ORIGINAL		DAS	JFD	DAS	4-17-01
REV	ECO	ENG'R	OP	CK	DATE
TITLE					
KATO GENERATOR					
DRAWING NUMBER					SH 1 OF 1
102-90619-00					

FIRST S/N 14482

S/N	DATE	SIGN
-----	------	------

