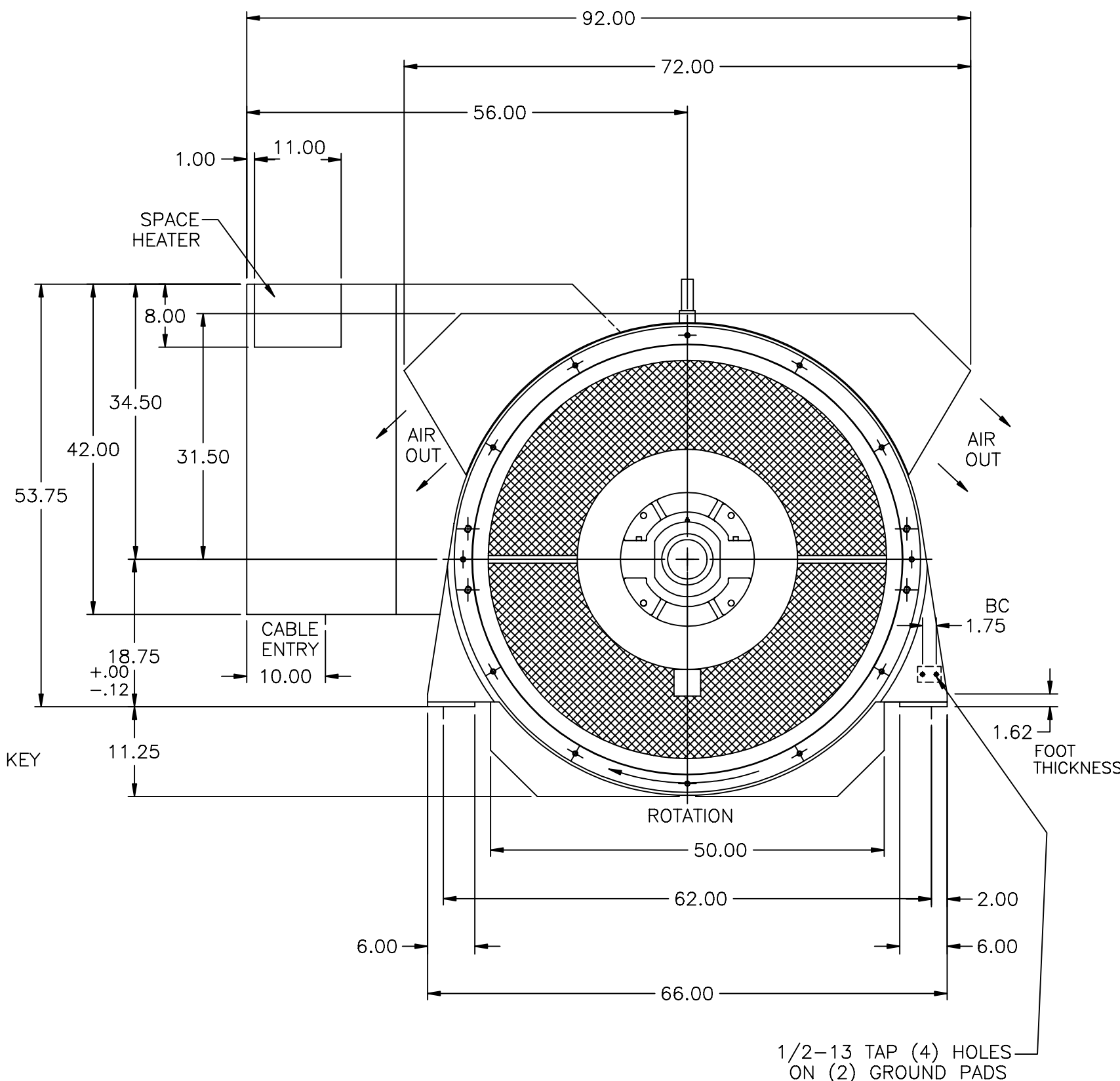
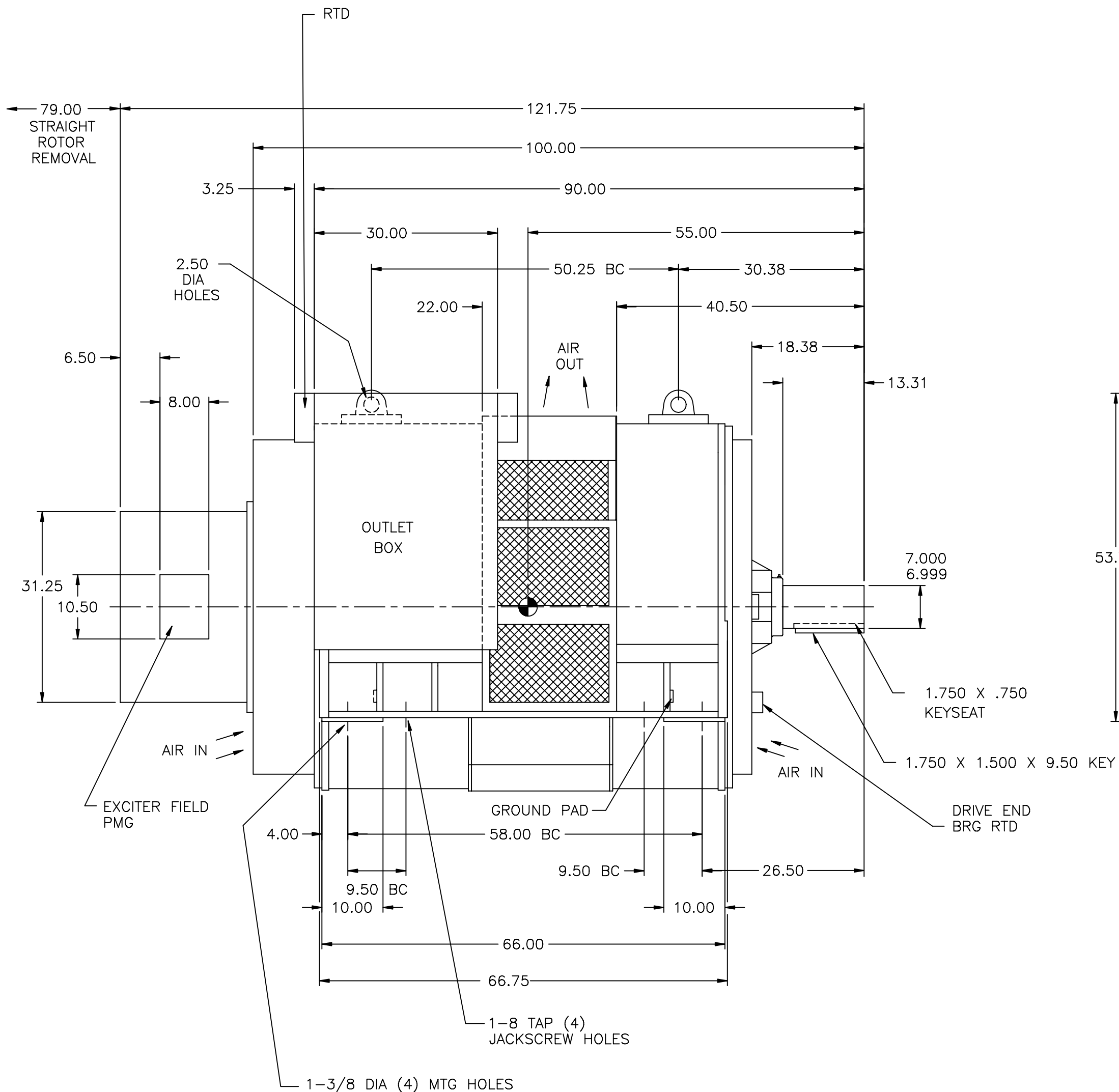


GENERATOR DATA

KW: 2910
 KVA: 3637.5
 VOLTAGE: 4160/3/60
 P.F.: 0.8
 F.L. CURRENT: 505 AMP
 INSULATION: CLASS F
 TEMP RISE 105°C OVER 40°C AMBIENT
 DUTY: CONTINUOUS
 SPEED: 900 RPM
 OVERSPEED: 1125 RPM
 WK2: 11,610 LB-FT²
 AIR FLOW: 8,000 CFM

BEARING DATA

TYPE: SPLIT ROLLER
 LUBRICATION: GREASE
 B-10 LIFE: 100,000 HOURS
 INSULATION: OUTBOARD BEARING
 GREASE INTERVAL: 600 HOURS
 ROTOR END FLOAT: .005 INCH
 THRUST CAPACITY: 500 LB



ROTOR WEIGHT: 12,300 LBS.
 STATOR WEIGHT: 14,000 LBS.
 TOTAL WEIGHT: 29,000 LBS.

CERTIFIED FOR								
CUSTOMER NAME	PROJECT NAME	A	71064	DAS	JFD		mtx	9-20-99
		ORIGINAL	KJD	KJD	DAS			9-16-99
		REV	ECO	ENG'R	OP		CK	DATE
TITLE		KATO GENERATOR					DRAWING NUMBER	SH 1 OF 1
S/N	DATE	SIGN						102-90548-00