

08-01-06

1.0 MW Mobile Unit for RENTAL – READY TO GO

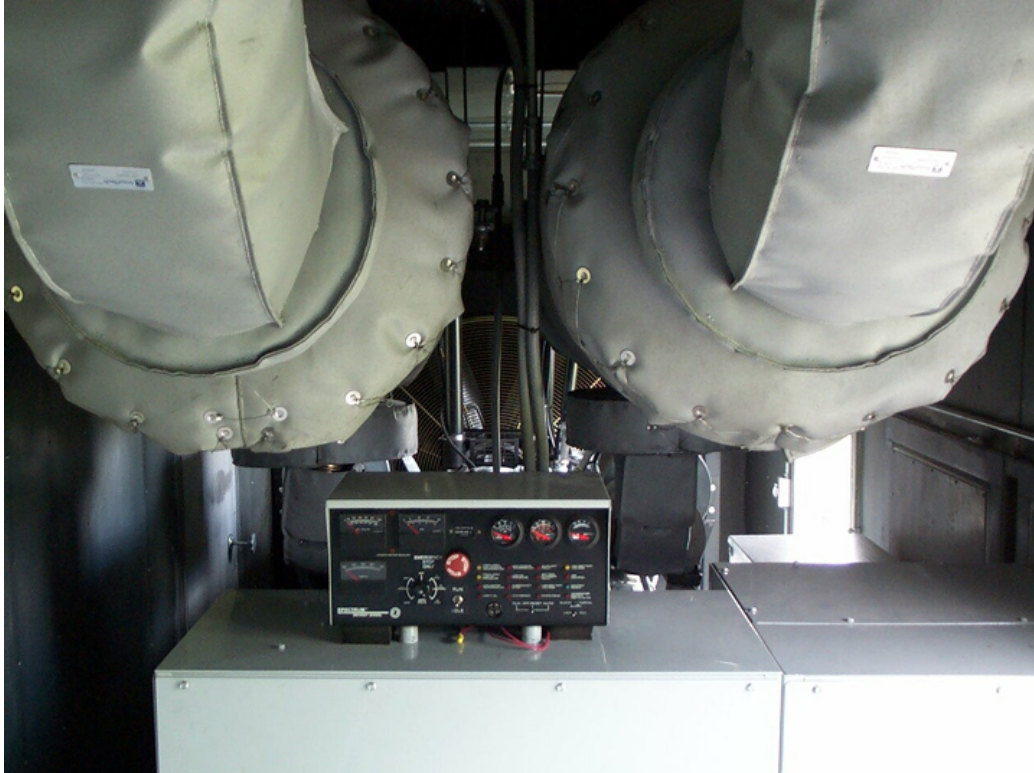
Kraft Power Corporation has a 1999 model 1000kW mobile unit for **RENTAL** with very low hours, 650 hour since new. This Spectrum generator features the DDC Series 2000 engine - 16 cylinder, 4 cycle, turbo charged, 1944 cu. in., 1495 b.h.p.

The alternator is rated at 277/480 volts, 3 phase, 4 wire, and 1504 amps at 130-degree rise C. The control panel is a 16 light microprocessor with audio/visual annunciation. This controller features microprocessor logic with AC meters and engine gauges compatible with 12 or 24-volt engine electrical systems. Unit is capable of remote starting, prime power operation, and remote annunciation.

The generator is mounted inside a sound attenuated, **40', ISO container**. The container is mounted on tandem axle running gear. The enclosure features a 1500-gallon, double wall, U.L. listed fuel cell along with motorized intake louvers, sound baffles, and gravity louvers on the discharge air duct. The enclosure also features AC and DC lighting along with an automatic battery charger, block heater, and AC connection panel









FOR SALE OR FOR RENTAL:

CALL FOR PRICE

Alvaro Escobar M - Sales Engineer
KRAFT POWER Corp
241 West Parkway, Pompton Plains, NJ, 07444
Tel: 973 835 9800, Fax: 973 835 5246
Efax: 775 258 9694
Cel: 973 - 418 - 6239
Email: aescobar@kraftpower.com,
www.kraftpower.com/index-span.html