

GRANT COUNTY AT27GL

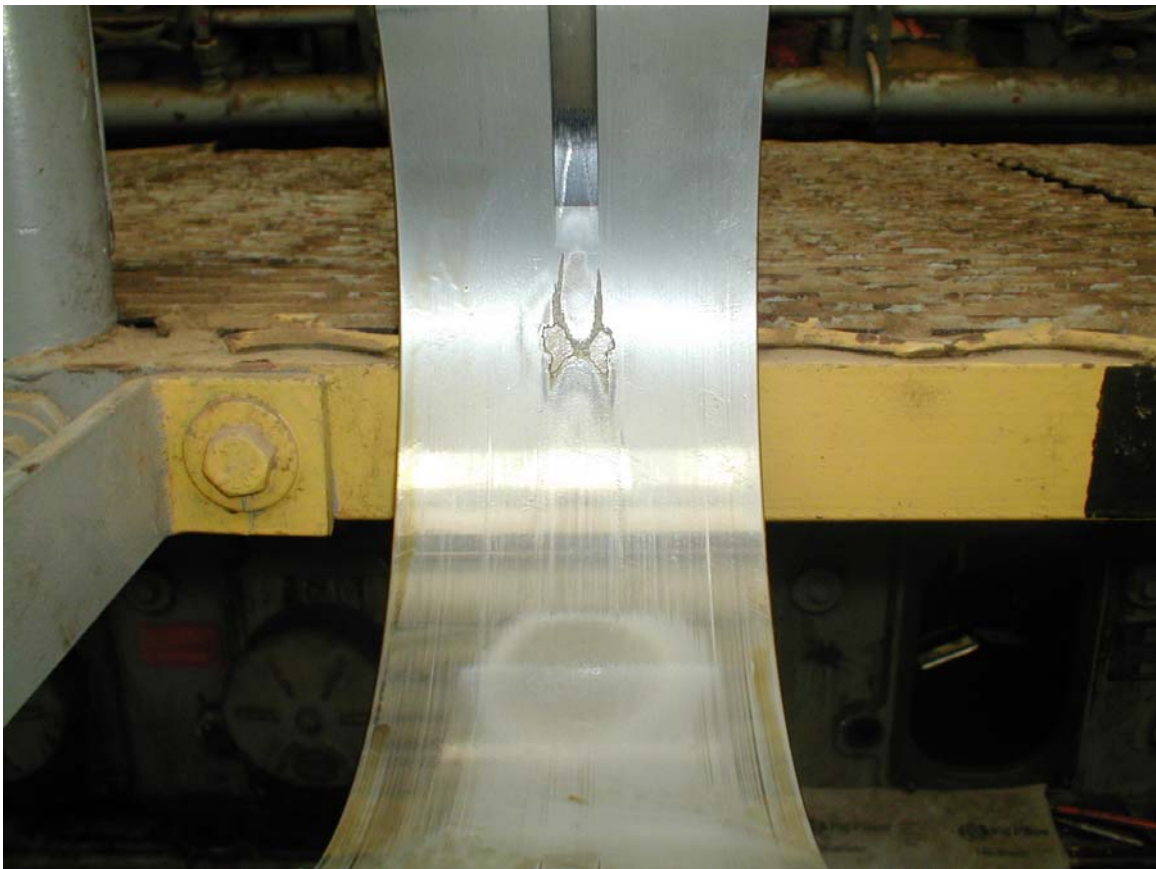
INSPECTION PERFORMED BY



Stewart & Stevenson

DATED 02/13/07

12VAT27GL – C- 11479-1



#2 LOWER MAIN BEARING
PART NUMBER 280118E
MANUFACTURE GLACIER
ID NUMBER HCL 9680
BEARING MICED AT .2915"

OBSERVATIONS: SOME DEBRIS MARKS PRESENT CAVITATION AT THE OIL GROOVES .



#2 LOWER MAIN BEARING
CLOSE UP OF CAVITATION



#2 MAIN BEARING JOURNAL
NO SIGNIFICANT WEAR FELT ON JOURNAL
THERE IS SOME POLISHING AND WEAR MARKS



#4 MAIN BEARING
NO CAVITATION
STILL HAS OIL FILM
UNABLE TO REMOVE BEARING WITH OUT ROLLING ENGINE



#4 MAIN BEARING DIFFERENT ANGLE



#4 MAIN BEARING JOURNAL

The number five journal was inspected but unable to take pictures there was some bearing cavitations marks present similar to the #2 main bearing . Journal was smooth with slight wear marks present tried to take profilometer readings not enough room take a correct reading. The crankshaft deflections were at $-.0005''$ on the number four journal.