

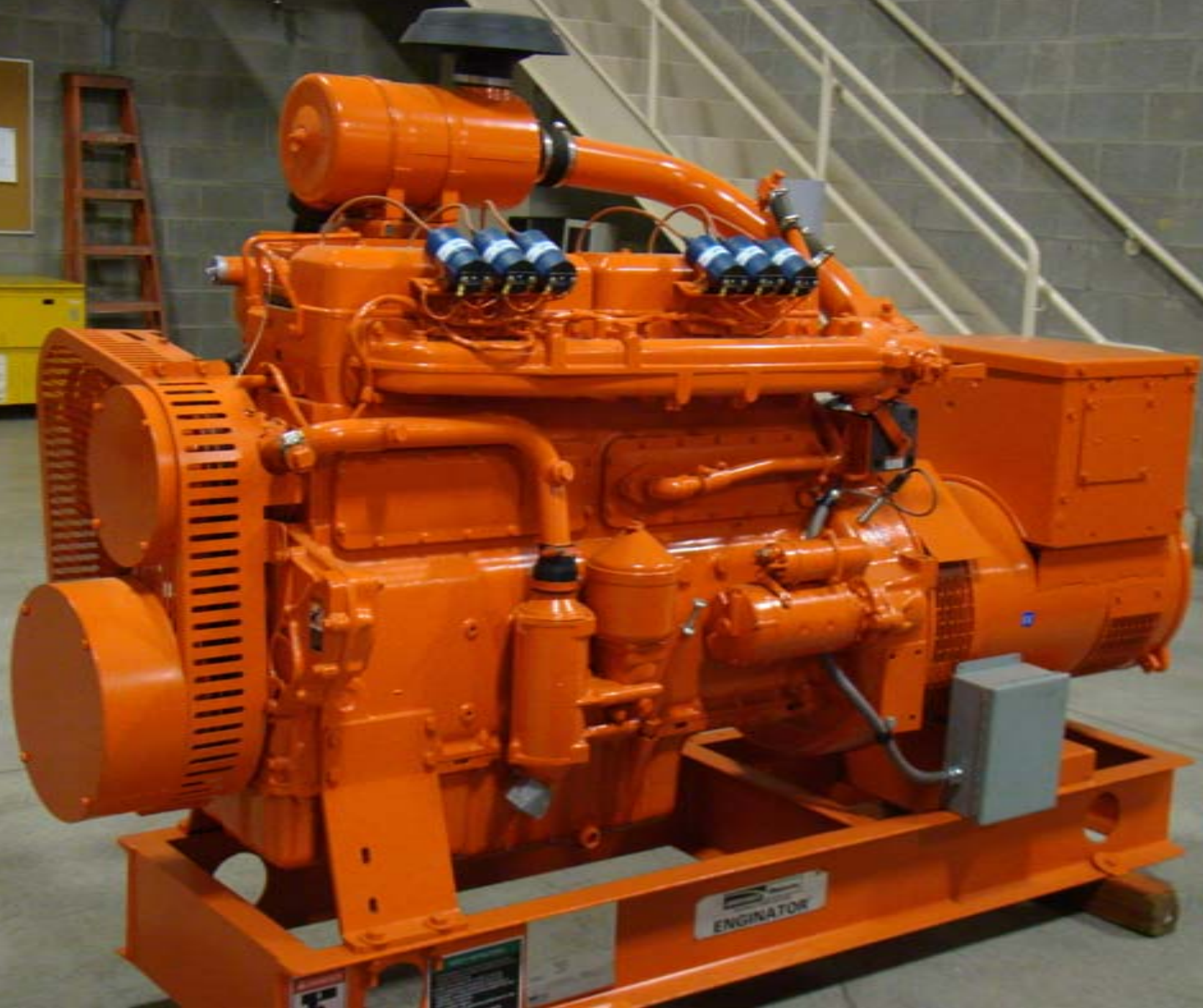
**100 KW STAND BY, 480/277 V. AC, 60 HZ, 1800 RPM**

**90 KW, STAND BY, 400 / 230 V. AC, 50 HZ, 1500 RPM**

**WAUKESHA (ENGINE) – GENERATOR SET**

**FULL OVERHAUL GENERATOR SET**

**LOAD BANK TESTED – READY TO GO.**



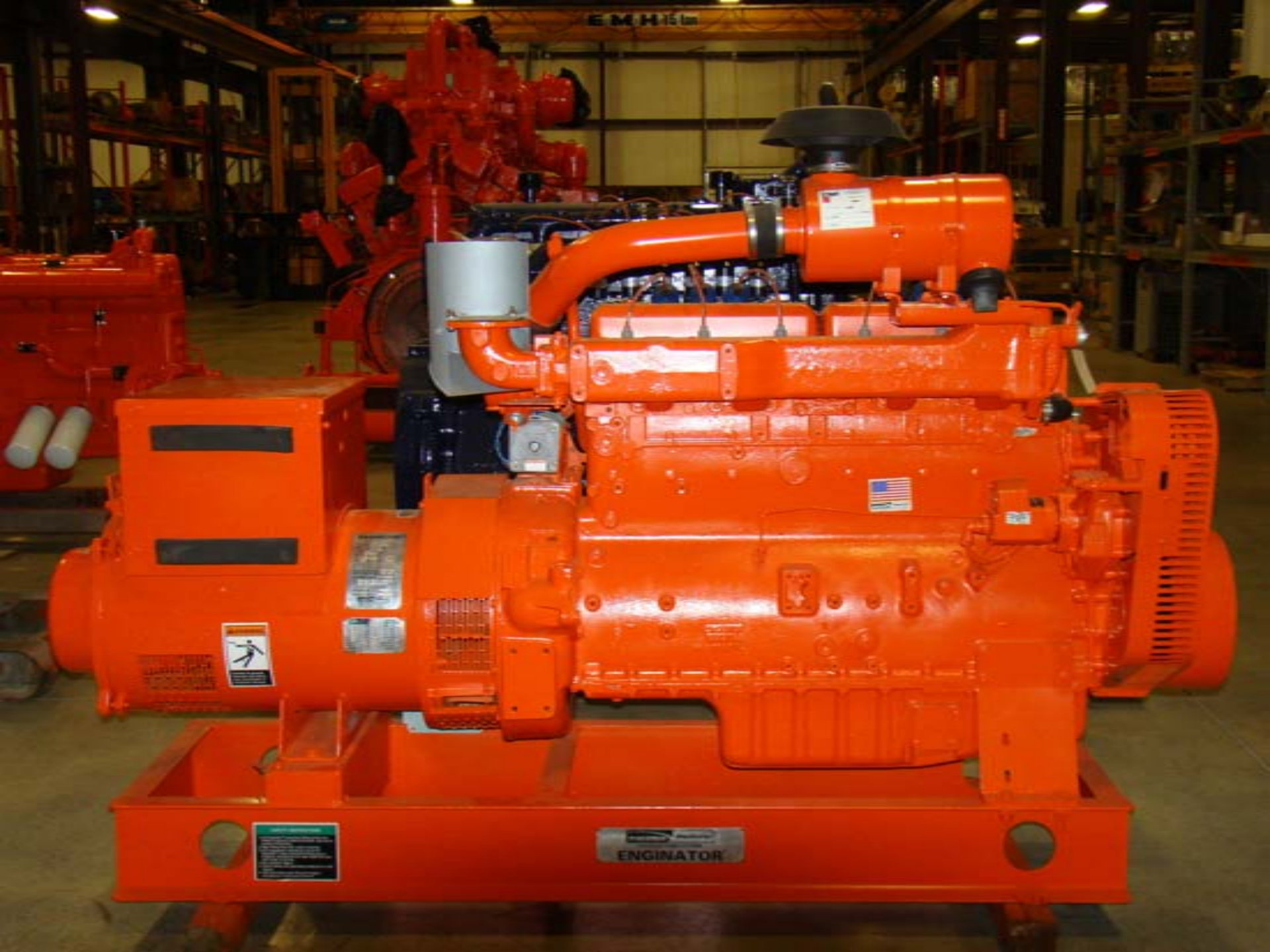
ENGINEATOR







E M H 15



WARNING  
Read the manual before operating the engine.  
Do not touch the engine when it is running.  
Do not drink alcohol before operating the engine.  
Do not use the engine in a confined space.  
Do not use the engine in a flammable or explosive atmosphere.  
Do not use the engine in a wet or damp environment.  
Do not use the engine in a high altitude environment.  
Do not use the engine in a high temperature environment.  
Do not use the engine in a high pressure environment.  
Do not use the engine in a high speed environment.  
Do not use the engine in a high vibration environment.  
Do not use the engine in a high noise environment.  
Do not use the engine in a high dust environment.  
Do not use the engine in a high salt environment.  
Do not use the engine in a high sulfur environment.  
Do not use the engine in a high acid environment.  
Do not use the engine in a high alkali environment.  
Do not use the engine in a high oxygen environment.  
Do not use the engine in a high carbon environment.  
Do not use the engine in a high nitrogen environment.  
Do not use the engine in a high hydrogen environment.  
Do not use the engine in a high helium environment.  
Do not use the engine in a high neon environment.  
Do not use the engine in a high argon environment.  
Do not use the engine in a high krypton environment.  
Do not use the engine in a high xenon environment.  
Do not use the engine in a high radon environment.

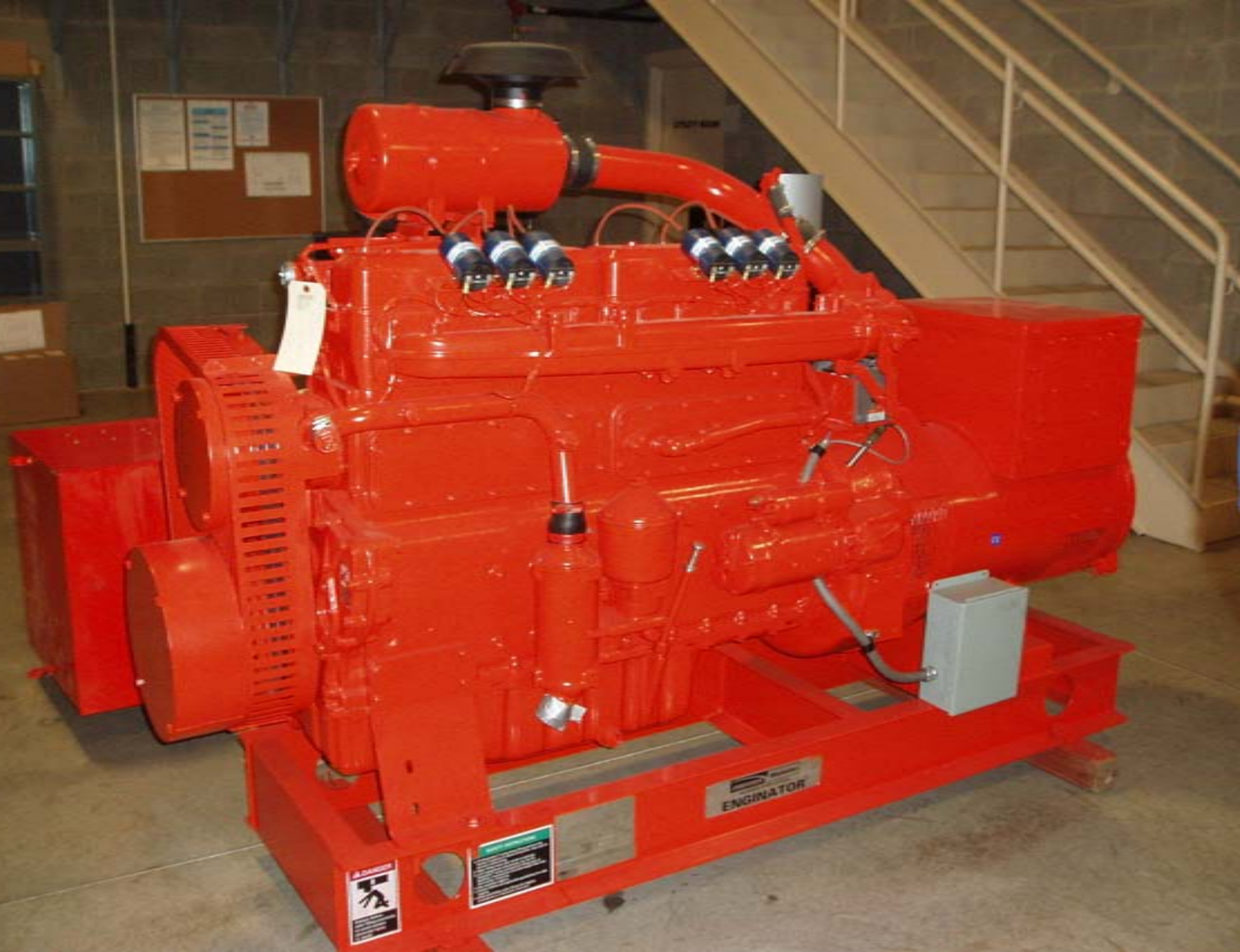
ENGINATOR



ENGINATOR

CE





ENGINEATOR

**! DANGER**  
[Warning symbol: person being struck by a falling object]

[Technical specifications label with illegible text]