

06-22-06

### 3 – Speed increasers, low hours - ready to go.

**Nuttall Gear Corporation - SPEED INCREASER, S/N: 9209-1, 2, 3**

The following data is the same for all three units:

Style: 91R56734  
Catalog: SU18-12L  
Service HP: 2585  
Ratio: 3.8718  
Service factor: 1.8  
Output RPM: 3.871  
Figure: R.H.  
D402735G01







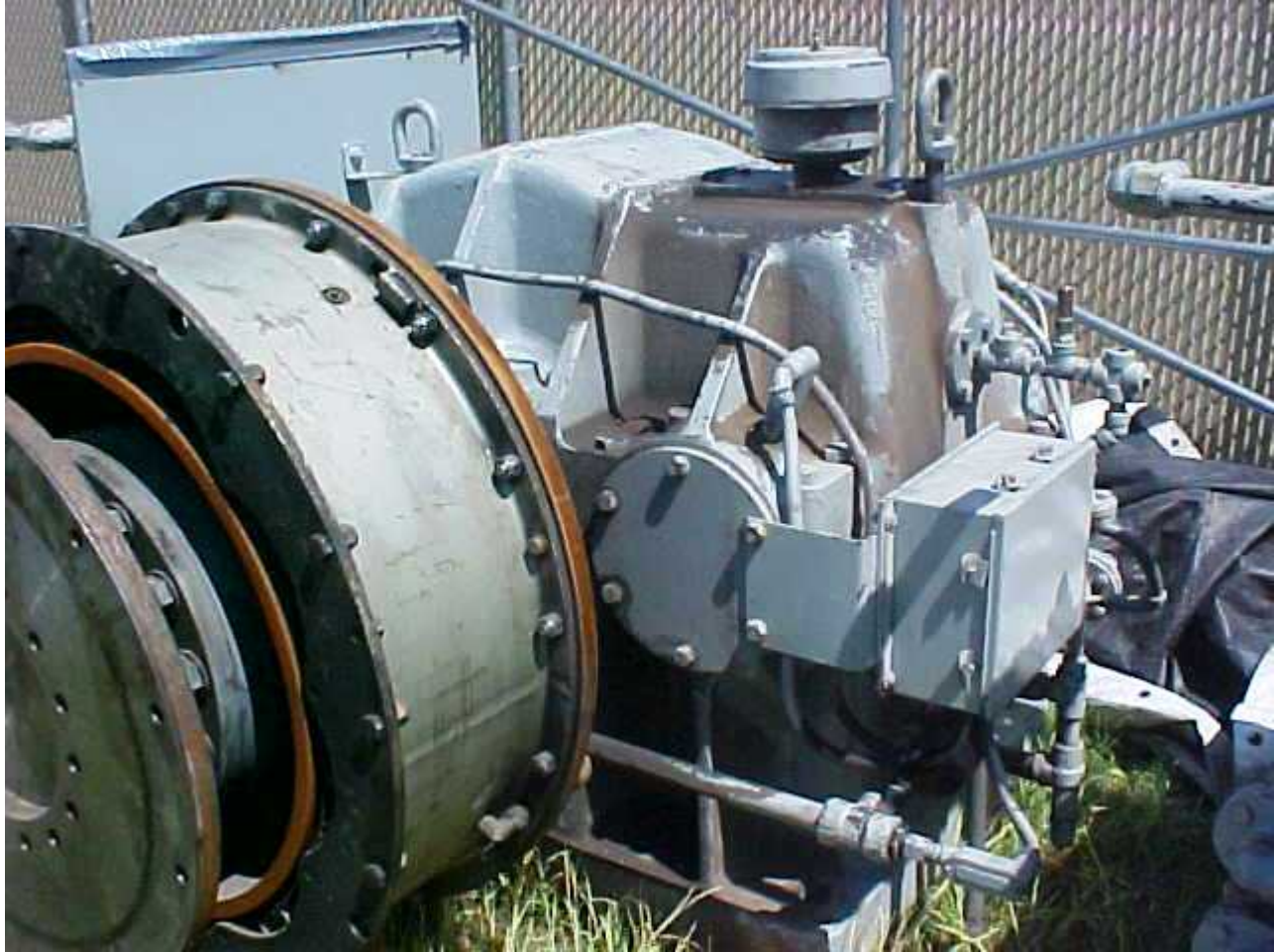












Alvaro Escobar M - Sales Engineer  
KRAFT POWER Corp  
241 West Parkway, Pompton Plains, NJ, 07444  
**Tel: 973 835 9800, Fax: 973 835 5246**  
**Cel: 973 - 418 - 6239, Efax: 775 258 9694**  
Email: <mailto:aescobar@kraftpower.com>,  
<http://www.kraftpower.com/index-span.html>