

Your Reliable Guide for Power Solutions

Short Circuit and Overload Protection Devices Within an Electrical System

Information Sheet # 06

The designer of an electrical system has the responsibility to meet code requirements and to ensure that the equipment and conductors within a system are protected against current flows that will produce destructive temperatures above specified rating and design limits.

This information sheet discusses protective devices that are used within a system, how they work and where they are used.

Protection against temperature is termed “overcurrent protection.” Overcurrents are caused by equipment overloads, by short circuits or by ground faults. An overload occurs when equipment is subjected to current above its rated capacity and excessive heat is produced. A short circuit occurs when there is a direct but unintended connection between line-to-line or line-to-neutral conductors. Short circuits can generate temperatures thousands of degrees above designated ratings. A ground fault occurs when electrical current flows from a conductor to uninsulated metal that is not designed to conduct electricity. These uninsulated currents can be lethal.

Overcurrent protection devices: The designer has many overcurrent protection devices to choose from. The two most common are fuses and circuit breakers. Many circuit breakers are also known as molded case breakers or MCBs.

Fuses:

A fuse is the simplest form of overcurrent protective device but it can be used only once before it must be replaced. A fuse consists of a conducting element enclosed in a glass, ceramic or other non-conductive tube and connected by ferrules at each end of the tube. (See *Diagram Two*) The ferrules fit into slots at each end to complete a split in a circuit. Excess current flowing through the fuse melts the device’s conducting element and interrupts current flow.

Fuses are rated by the amperage they can carry before heat melts the element. The fuse is ideal for protection against short circuits. Short circuits produce enough amperage to vaporize a fuse element and break connection in one cycle of a 60-cycle system.

Fuses are more commonly used in devices connected to a system than within the system’s circuit.

Circuit Breakers:

Now, conductors in systems are usually protected by circuit breakers. Tripped circuit breakers can be reset after the fault is cleared, an advantage over fuses that must be replaced. A molded case circuit breaker, or MCB, has two distinct operating components. (See *Diagram One*)

Thermal Trip Component: This component is a bimetal strip that carries the current. When the current exceeds a predetermined limit, heat produced by the excess current causes the strip to bend and trip the trip mechanism, which breaks the contact and interrupts the current.

Magnetic Trip Component: This component is a solenoid that generates a magnetic field created when an electric current passes through its coil. When the flow exceeds predetermined levels, the resulting magnetic force is sufficient to move an armature, held back by a spring, to trip the trip mechanism. This locks the circuit contacts in the open position.

Circuit breakers are available in three types. Systems designers will choose among inverse time trip, adjustable trip or instantaneous trip circuit breakers, depending on the protection sought.

Breaker Types:

- 1) Inverse Time Trips:** These breakers trip faster as current increases. This provides overload protection but also allows equipment and conductors to carry excessive loads briefly.
- 2) Adjustable Trips:** These breakers are used when the operation of several protection devices in a system must be coordinated. Designers place the lowest rated trips nearest to the devices being protected so that a fault in one area is isolated but allows current elsewhere in the system to continue to flow.
- 3) Instantaneous Trips:** These use only the magnetic element of the trip and provide no overload protection. Also known as motor circuit protectors, or MCPs, they normally are used to protect large motors from short circuits and ground faults.

Rating protection devices: Short circuits can produce enough thermal and electromagnetic forces to destroy any protective device. When selecting a protective device, it is very important to consider the available short circuit amperage, or SCA, which is the potential amperage at any site in the system. The SCA will be measured at the equipment terminals, the utility transformer and the distribution panel. The highest value will be at the power transformer. The conductivity of the material, its size and its length will reduce the SCA down the line from the transformer. (See *Diagram Three*)

The correct size overcurrent protection device can be chosen when the system’s SCA is known. SCAs are measured in amperes. Fuses and circuit breakers are assigned an amperage interrupting capacity, or AIC, which indicates the SCA that can be sustained before tripping. Unless otherwise designated, fuses are rated 10,000 AIC and circuit breakers are rated 5,000 AIC. (See *Diagram Four*)

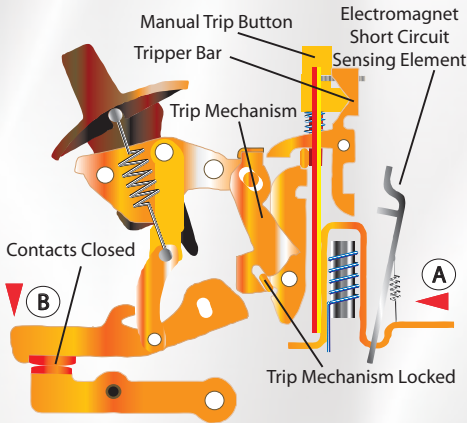
Protection devices are rated to manage both the normal maximum load and the potential short circuit amperage at any given part of the system. Equipment controls should have a short circuit rating that enables them to absorb current while the protective device clears the circuit. If the rating of the controller is lower, a fast-clearing fuse with a lower rating than the controller should be used.

To fulfill our commitment to be the leading supplier in the power generation industry, the Kraft Power Corporation team ensures they are always up-to-date with the current power industry standards as well as industry trends. As a service, our **Information Sheets** are circulated on a regular basis to existing and potential power customers to maintain their awareness of changes and developments in standards, codes and technology within the power industry.

The installation information provided in this information sheet is informational in nature only, and should not be considered the advice of a properly licensed and qualified electrician or used in place of a detailed review of the applicable National Electric Codes and local codes. Specific questions about how this information may affect any particular situation should be addressed to a licensed and qualified electrician.

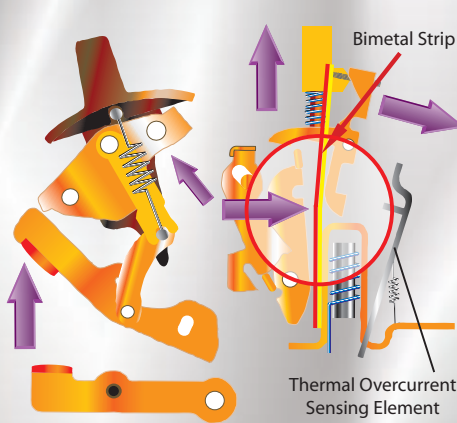
Diagram One - Thermal and Magnetic Trip Elements of a Circuit Breaker

Closed Energized Circuit Position



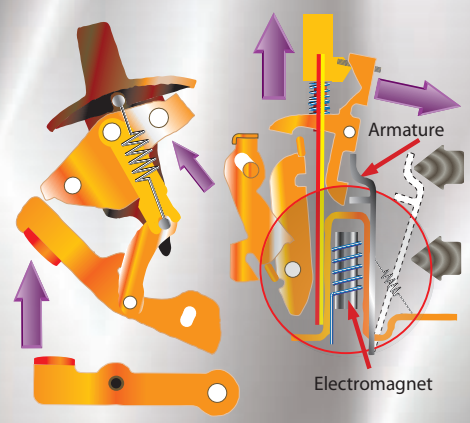
In the "ON" position, as above, the trip mechanism keeps the circuit closed and lets current flow from "A" to "B". The trip mechanism can be engaged manually for overload by thermal sensing and short circuit by an electromagnetic device. There is also a manual trip button.

Tripped Thermal Overload Position



Current flowing through the bimetal strip causes it to heat up. When a certain heat is reached, the strip bends and operates the trip mechanism. The strip is calibrated to start bending when overload amperage is reached. The higher the current flow, the quicker the bimetal trips the breaker.

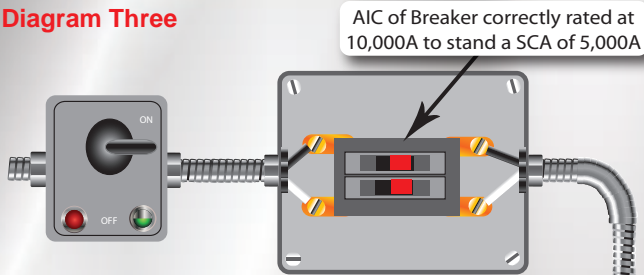
Tripped Magnetic Short Circuit



Short circuit protection is provided by the electromagnet. The electromagnet produces a magnetic field sufficient to pull the armature only when overload amperages are reached. Tripping occurs when the armature strikes the tripper bar. This cuts current flow and releases the armature.

Copyright 2006 PLC Enterprises, LLC

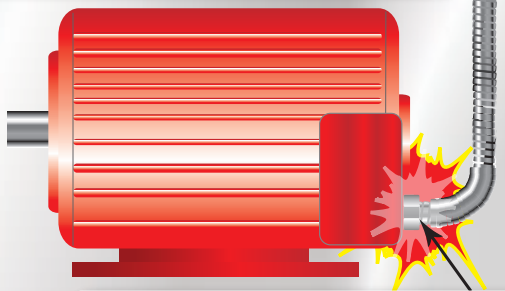
Diagram Three



AIC rating to manage potential SCA

The protection device has to have an AIC rating that exceeds the SCA of the equipment being protected to ensure it can trip before it is damaged by the potential fault current.

Note: AIC = Amperes Interrupting Capacity
SCA = Short Circuit Current (Rating)



Copyright 2006 PLC Enterprises, LLC

Nonconducting material between ferrules

Fuses react quickly for short circuit protection

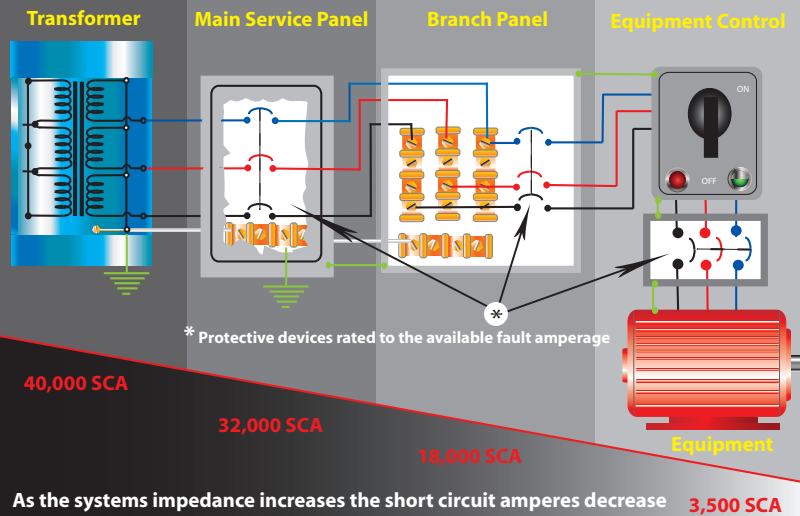
Ferrule

Diagram Two

Holes enable speed disconnection when overcurrent melts the element

COPYRIGHT 2006 PLC Enterprises, LLC

Diagram Four - Example of decreasing SCA from transformer to equipment



As the systems impedance increases the short circuit amperes decrease

COPYRIGHT 2006 PLC Enterprises, LLC

7 convenient Kraft Power locations, one website: www.kraftpower.com

KOHLER
POWER SYSTEMS

199 Wildwood Ave
Woburn, MA 01888
781-938-9100 T
781-933-7812 F

601 Cambridge Ave
Syracuse, NY 13208
315-455-6200 T
315-455-6300 F

241 West Parkway
Pompton Plains, NJ 07444
973-835-9800 T
973-835-5595 F

948 Blooming Glen Rd.
Perkasie, PA 18944
215-249-0200 T
215-249-1176 F

608 Cleveland Ave, SW
Canton, OH 44702
330-455-7096 T
330-455-0798 F

10615 Texland Blvd.
Charlotte, NC 28273
704-504-3033 T
704-504-5160 F

1000B Northbrook Pkwy
Suwanee, GA 30024
770-963-6288 T
770-963-9678 F

Email: info@kraftpower.com

KRAFTPOWER
The power of performance.